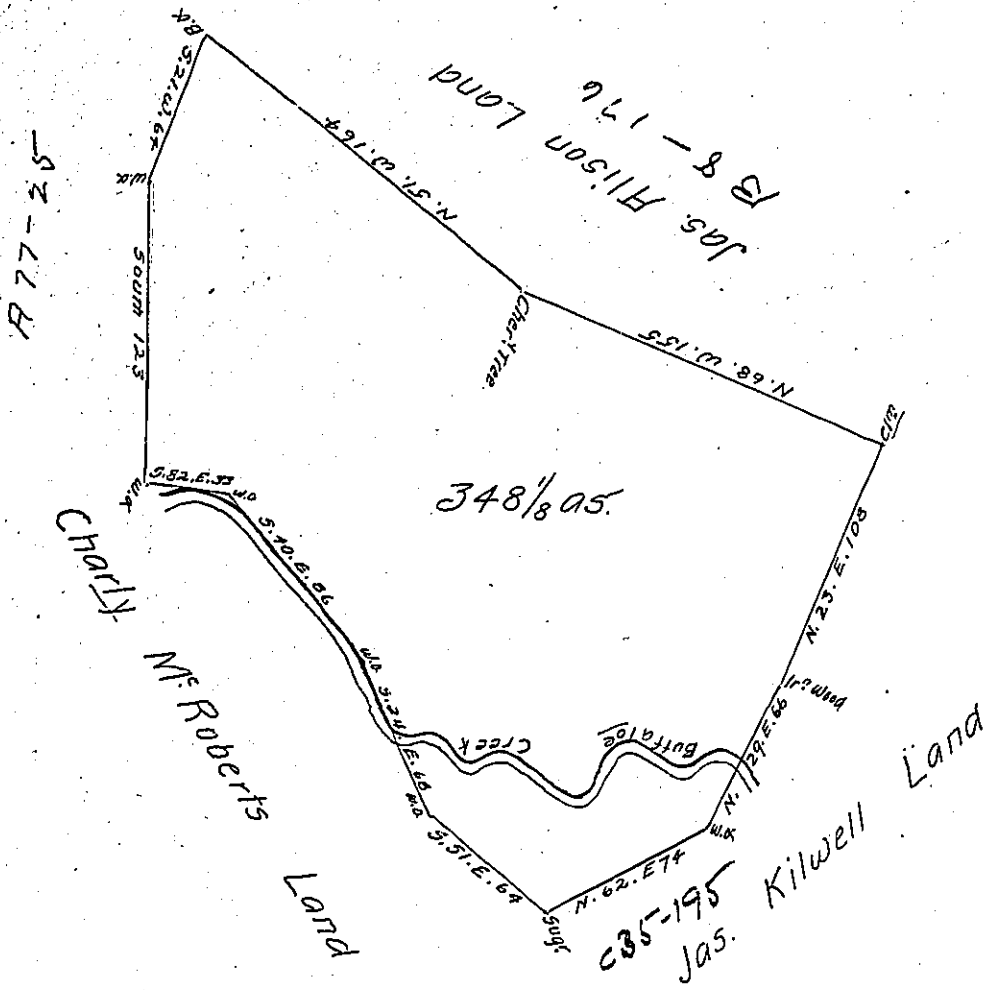


The Course up
Buffaloe Creek

- 5.82. E. 33 wa.
- 5.40. E. 86 wa.
- 5.24. E. 68 wa.



The Above is a Draught of a Tract of Land situate on the Waters -
 Buffaloe Creek Cald Milberry Hill Containing three Hundred and forty eight
 Acres and one sixth surveyed Aprile the 28th 1786 in pursuance of a Cer-
 tificat Granted by the Virginia Commissioners to Thos. Gillilen which Certificate
 is of Record as appear by the transcript from sd Record - ~~Entd~~ Entd 8th Mar 1780.
 Filed 23d. Octor. 1786.

Jno. Hoge D.S.

John Lukens Esqr. }
 Sr. Cl. State Penns! }

IN TESTIMONY that the above is a copy of the original remaining on file in
 the Department of Internal Affairs of Pennsylvania, made
 conformably to an Act of Assembly approved the 16th day of
 February, 1833, I have hereunto set my Hand and caused
 the Seal of said Department to be affixed at Harrisburg,
 this first day of November 1904

Loac R. Brown
 Secretary of Internal Affairs.